

CIVIL ENGINEERING



The expertise to build.
The experience to succeed.

LES CONSTRUCTIONS
BINET

WE DELIVER...
under any condition!

experience



◀ **PORT
IMPROVEMENTS**

Place: Cap-aux-Meules
Îles-de-la-Madeleine

Year completed: 2010-2011

Cost: 7M\$

Project: Anchoring system and pon-
toon guidance.

**MAIN DOCK ▼
BREAKWATER**

Place: Cap-aux-Meules
Îles-de-la-Madeleine

◀ Year completed: 2009-2010

Cost: 12M\$

Project: Build the breakwater using a
barge. Project on an island,
without any road access. The
protection rocks come from
the exterior. Fabrication of
dolosse on site.



With 30 years of experience in construction, the Constructions Binet crew has faced many challenges in the civil engineering project, complex and specialized projects, in particular in the maritime field.

We have made allies of the winds, currents and tides. Our specialists are conscious of the quality and security. Time schedule and budgets always have to be taken in account and the whole team works towards this goal.

OUR STRENGTHS:

- State of the art equipment
- Accrued technique crews
- Adequate and well applied prevention programs
- An excellent grasp of the quality documents
- Key in hand projects including the conception of plans to the completion of the project
- Ease of displacement even in far away regions due to the size of the crew

DOCKS ▶

Place: Havre Aubert
Îles-de-la-Madeleine

Year completed: 2005

Cost: 8M\$

Project: Dismantle old dock and rebuild it on the same site.



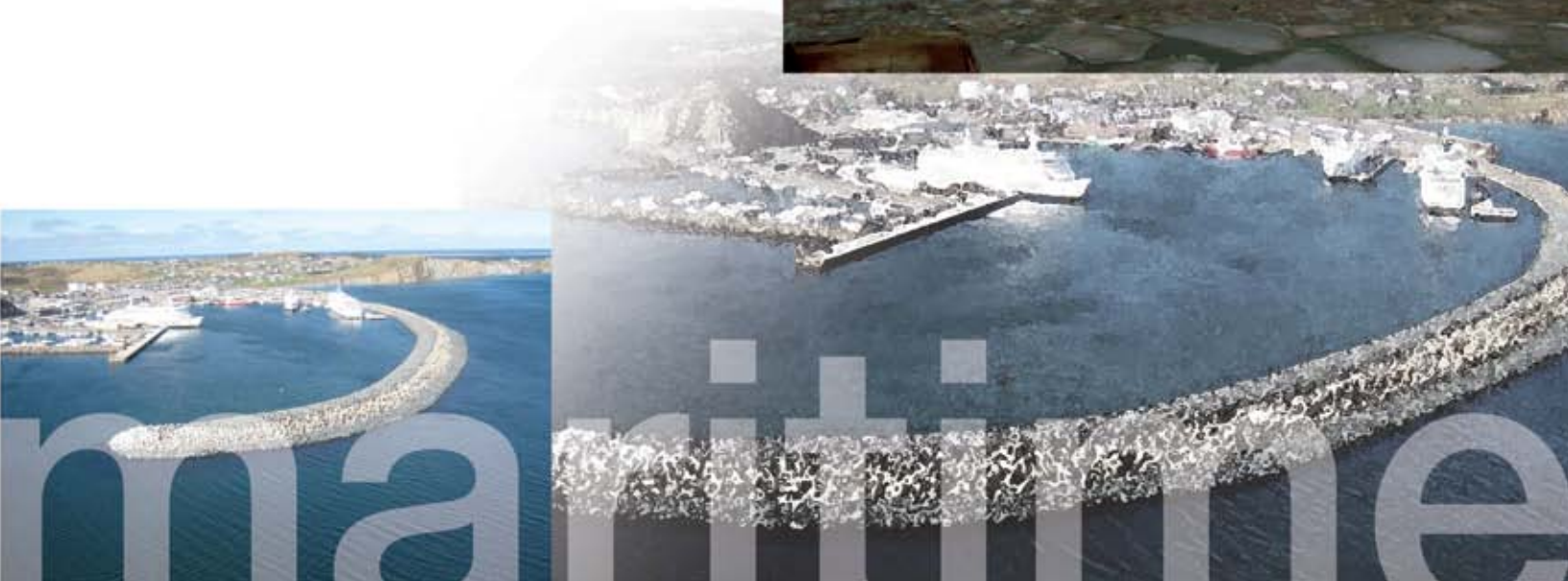
BREAKWATER ▶

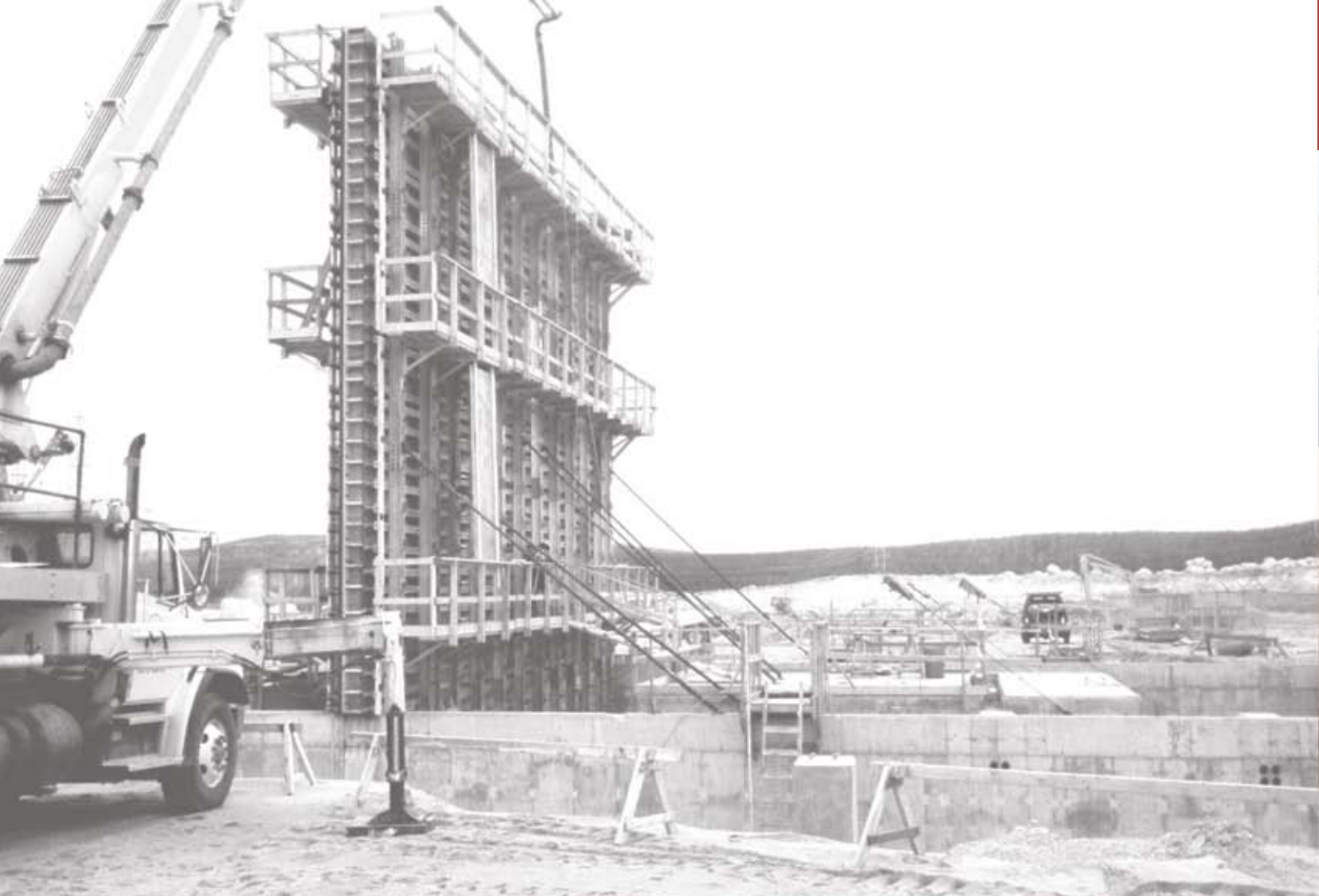
Place: Étang-du-Nord
Îles-de-la-Madeleine

Year completed: 2010

Cost: 2M\$

Project: The rock comes from the exterior of the island. Transported by barge.





LES CONSTRUCTIONS **BINET**

ISO 9001: 2008 | LICENSE R.B.Q.: 2167-8008-13

Head Office:

227 Road 271, P.O. Box 1020
Saint-Benoît-Labre, Beauce-Sud
(Québec) G0M 1P0
Tel.: **418-228-1578**
Fax: **418-228-1906**

Northern Division:

1009-B Quévillon Blvd., P.O. Box 1911
Lebel-sur-Quévillon
(Québec) J0Y 1X0
Tel.: **819-755-2700**
Fax: **819-755-2700**

www.lesconstructionsbinet.com