

COMMERCIAL



The expertise to build.
The experience to succeed.

LES CONSTRUCTIONS
BINET

KNOWING THE TERRITORY...

even far away!

technology



◀ THEATRE

Place: Rimouski

Year completed: 2004-2005

Cost: 12M\$

Project: A project that has been qualified as a work of art!



STUDENT RESIDENCE

◀ Place: Kangiqsujuaq

Year completed: 2009

Cost: 6.7M\$

Project: Work done on distant land, thus all the problems dealing with the transport of the material to the far away site of Kangiqsujuaq.



MODULAR DETENTION CENTRE

◀ Places: Québec, Sherbrooke, Amos and Trois-Rivières

Year completed: 2009-2010

Cost: 13.5M\$

Project: From the conception and the completion, we had a time table of 6 months to complete the work. We met the time schedule which was very tight, hence, this was a project completed in record time!

Projects in far away regions, the Constructions Binet crew has seen many and know the challenges that these undertakings represent.

Furthermore we are proud to support the Sanjiit program (an on site training program set forth by the Kativik Regional Administration) whose objective is to financially support contractors and sub-contractors who hire and train Nunavit workers in the construction field.

OUR STRENGTHS:

- A state of the art method of getting the material and equipment rapidly on site

- A crew with an open mind capable of dealing with all the challenges that come up
- A willingness to work with the local community and to adapt to their way of thinking
- An environmental awareness of the population of the Great North
- A willingness to hire the natives in the work force in all the local projects and further their integration to the crew
- State of the art equipment and adequate and well applied prevention programs and an excellent grasp of our quality documents

LA GRANDE LG1 CENTRAL ▶

Place: James Bay

Year completed: 2010

Cost: 3.7M\$

Project: Conception of a special scaffolding system that allowed us to save 8 weeks off the original date of completion of the project.

EXPANSION OF FIRST-AID STATION ▶

Place: Pakua Shipi

Year completed: 2010

Cost: 3.9M\$

Project: This project required an excellent coordination, notably for the planning of the transport of the materials by boat. It was also an excellent work of collaboration: our crew had to work when the centre was open for business.

CONSTRUCTION OF A MULTIFUNCTIONAL CENTRE ▼

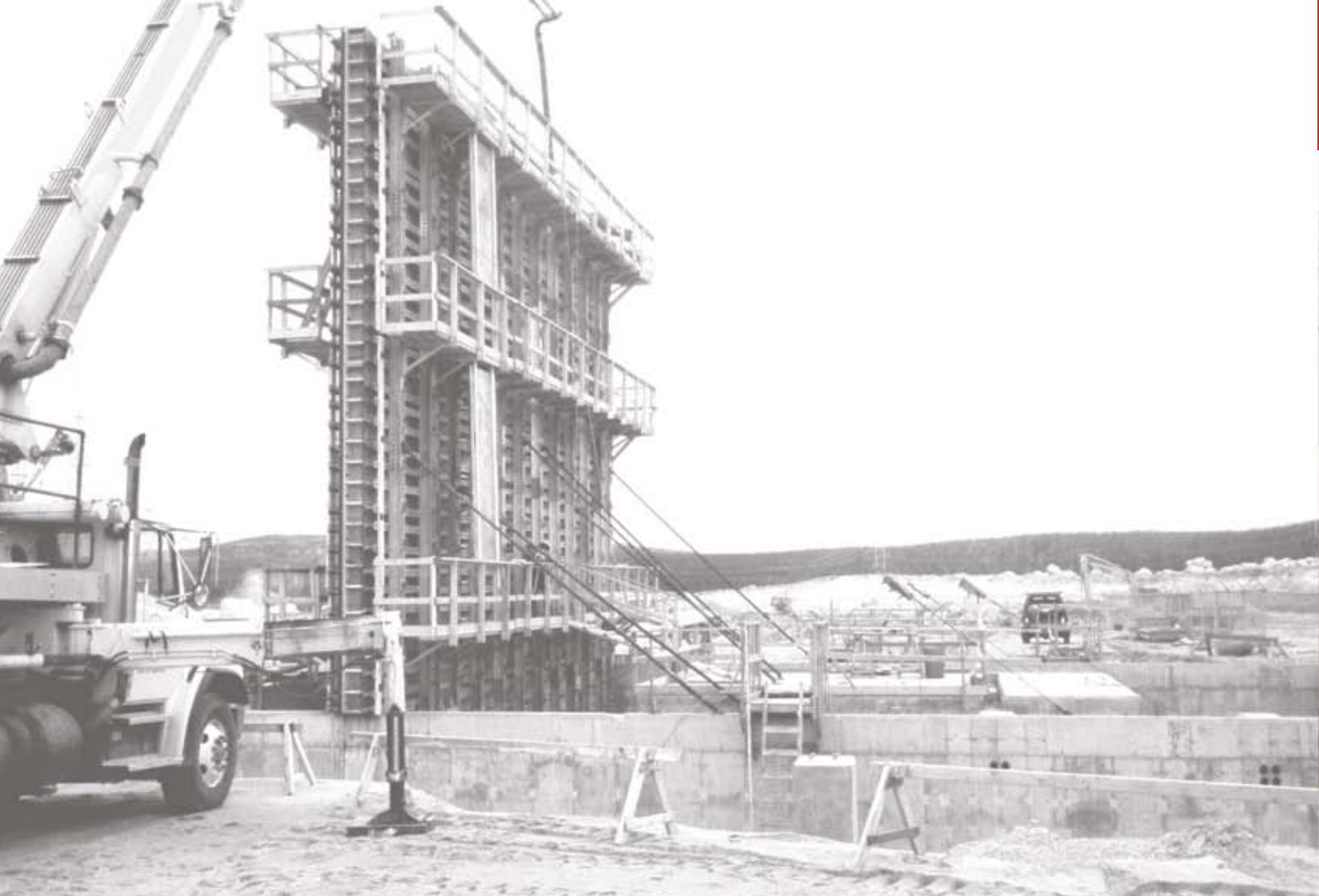
Place: Kangiqsualujjuaq

Year completed: 2010

Cost: 3.2M\$

Project: Convert a 2 floor 27 apartment building into a 19 adapted studio Centre.





LES CONSTRUCTIONS **BINET**

ISO 9001: 2008 | LICENSE R.B.Q.: 2167-8008-13

Head Office:

227 Road 271, P.O. Box 1020
Saint-Benoît-Labre, Beauce-Sud
(Québec) G0M 1P0
Tel.: **418-228-1578**
Fax: **418-228-1906**

Northern Division:

1009-B Quévillon Blvd., P.O. Box 1911
Lebel-sur-Quévillon
(Québec) J0Y 1X0
Tel.: **819-755-2700**
Fax: **819-755-2700**

www.lesconstructionsbinet.com